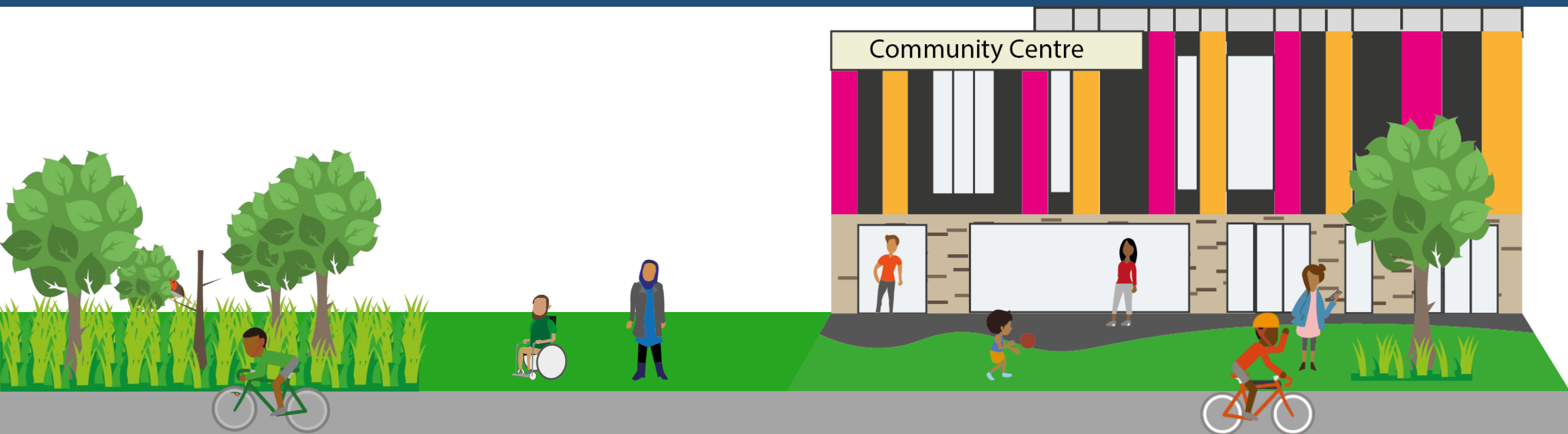


# Draft Local Plan briefing

## Health & Wellbeing Board

19 September 2024



# What I will cover

1. What is the Local Plan
2. Developing a New Local Plan
3. Placemaking for Haringey
4. Embedding Health & Wellbeing



# What is the Local Plan

## Key planning document

Provides a long-term vision for development and change in Haringey and alongside the London Plan is the starting point for deciding all planning applications in the borough

## Key corporate document

Key opportunity to reflect the Council's latest strategic aspirations and a key tool to address major challenges i.e. Public Health, Climate Emergency, Housing, Equity

## Key engagement document

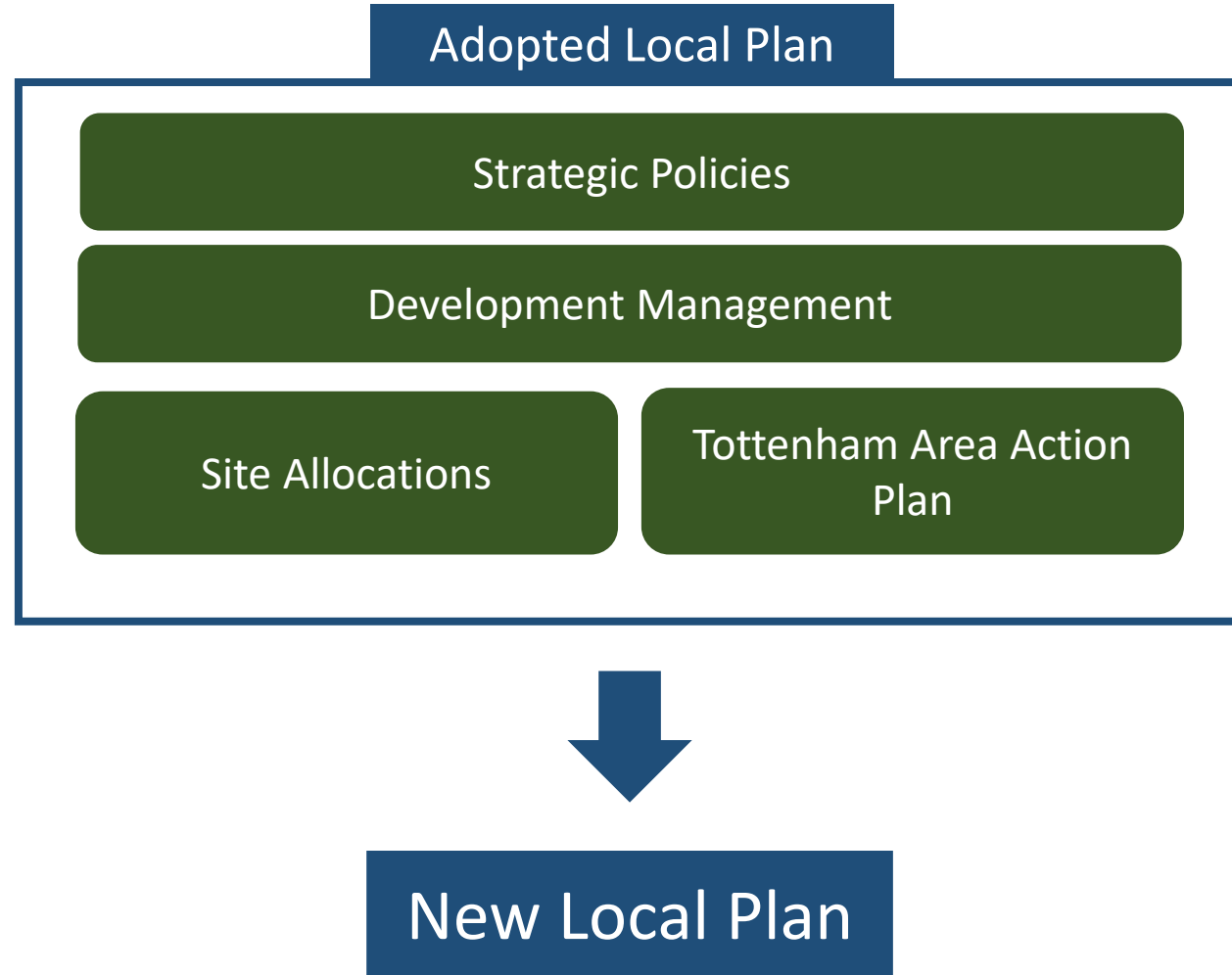
Includes a broad and extensive engagement process for residents to shape planning consistent with Haringey Deal

## Requires updating every 5 years

Needs to respond to new regional and national policy, new political drivers, new context and challenges

# Our adopted Local Plan

**New Local Plan  
will replace  
4 x documents  
adopted in 2017**



# Developing a New Local Plan

## Adopted Local Plan

Covers period 2013 to 2026

Narrative based on **MANAGING GROWTH**

Focus on **‘Growth Areas’**

- Tottenham
- Wood Green

Comprised of **numerous PDF documents**

## New Local Plan

**Covers period 2026 to 2041**

Set out borough wide framework for **PLACEMAKING**

Vision and strategies set out for **all neighbourhoods in the borough.**

**Clearly embeds Placemaking** for Haringey within all policies

A **Digital Plan** that seeks to effectively monitor and measure the effectiveness of its policies

**2021** – First Steps Engagement (award winning )

**2022-2024** – Collaboration with internal services, Cabinet Member for Planning, New Local Plan Member Working Group

**2023-2024** – Draft Local Plan under preparation

**Late 2024** – Cabinet decision to consult on Draft Local Plan

**Early 2025** – Draft Local Plan consultation

**Summer 2025** – Proposed Submission Local Plan consultation

**Winter 2025** – Submission & Examination

**Spring 2026** - Adoption

# Structure of the Local Plan

Overarching narrative on the what Haringey will be like in 2041.

## VISION

Our focus areas for delivering placemaking through land use and development

## PLACEMAKING FOR HARINGEY Objectives, Priorities and Approach

Our process for enabling land use change and development

## SPATIAL STRATEGY

Policies on housing, employment, green and blue infrastructure and other themes to guide placemaking

## THEMED POLICIES

## NEIGHBOURHOOD POLICIES

Local spatial visions, strategies and policies to guide placemaking within our neighbourhoods and on key sites

# Placemaking for Haringey

## Definition of Placemaking

A process that seeks to:

- **empower our people** to shape places that enable everyone to reach their potential
- **meet our needs and ambitions** for a fairer, healthier, greener Haringey
- **enhance and celebrate** our unique environments, histories, cultures, communities, and identities

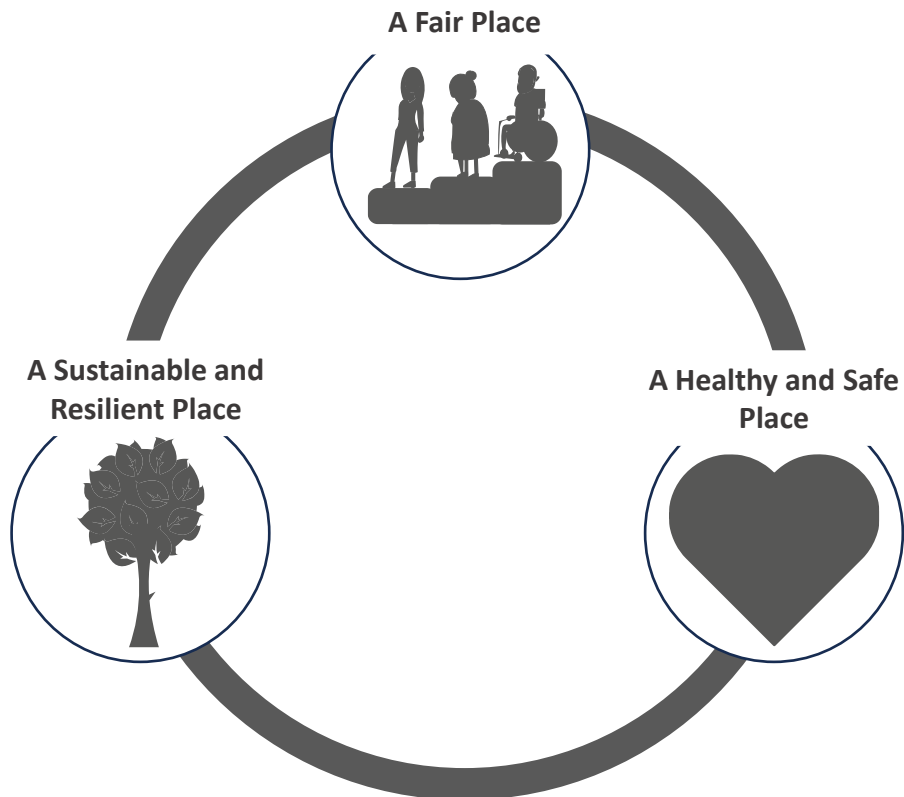




# Components of Placemaking

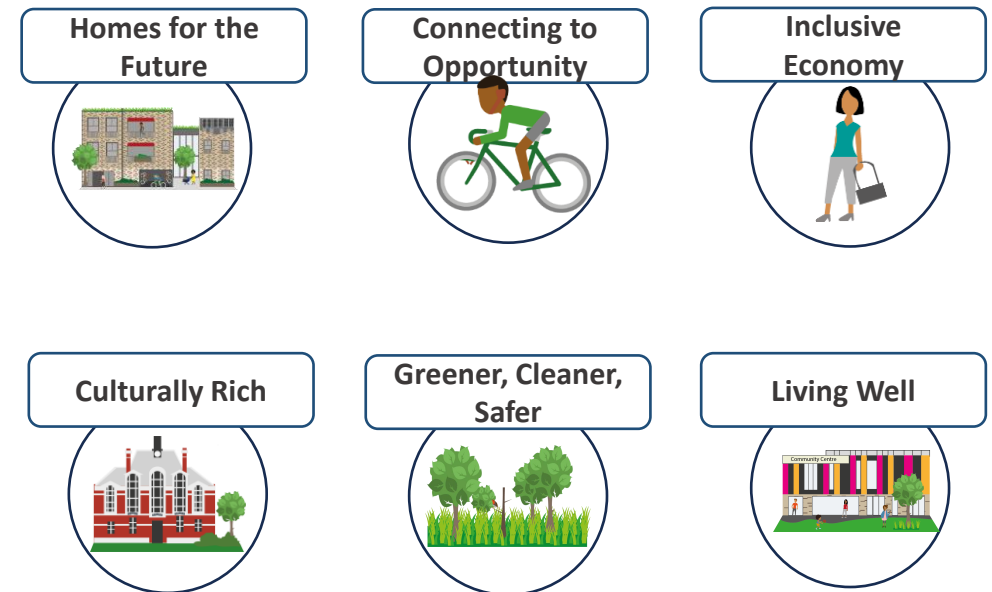
## Objectives

The fundamentals of what we want to achieve. They cut across all the different topics within the Local Plan and are embedded within each policy.

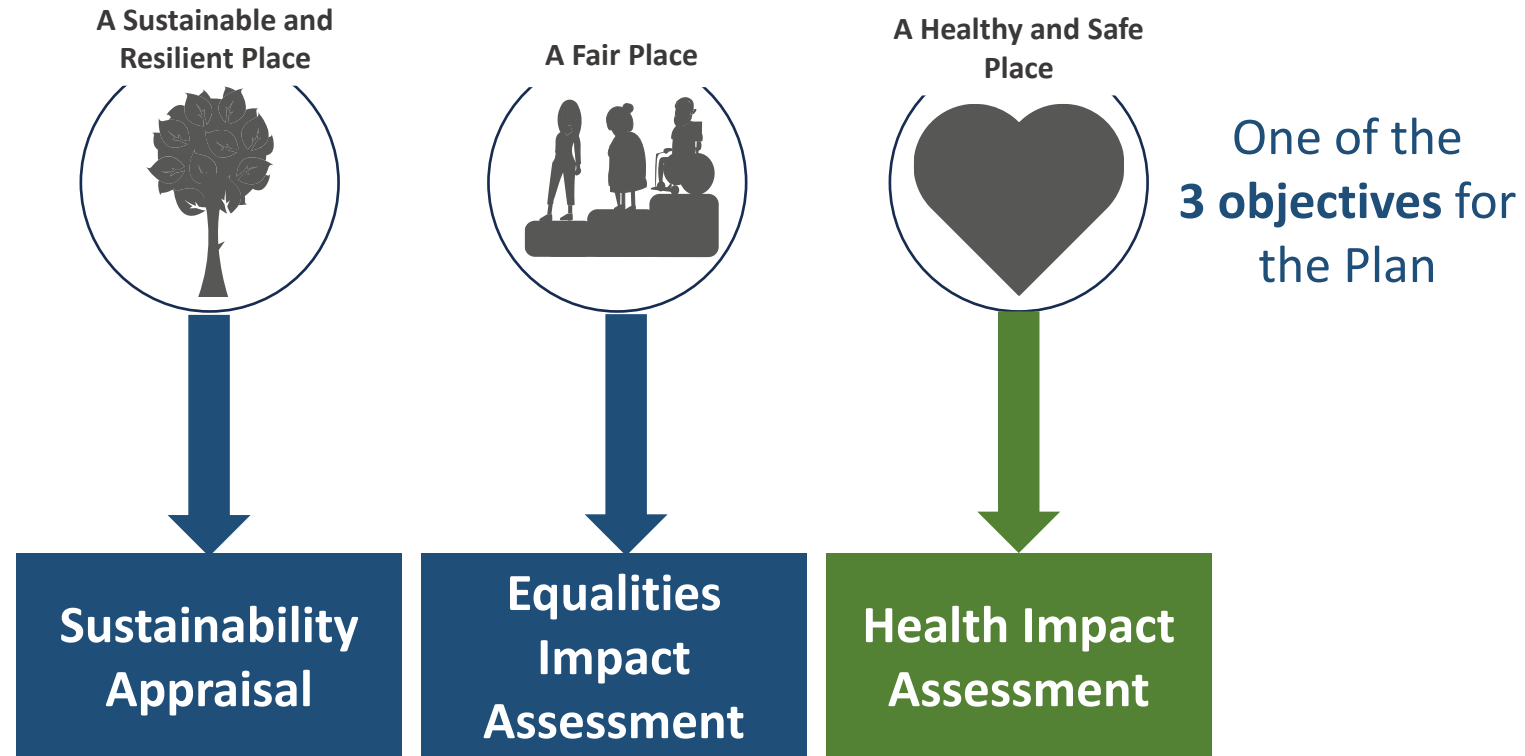


## Priorities

Our Haringey-specific priorities to be embedded within each section of the Local Plan.



# Embedding Health and Wellbeing



## Integrated Impact Assessment

A tool for ensuring we are making good decisions when developing the Local Plan

## Approach to Growth

- Supporting accessible, walkable neighbourhoods
- Encouraging a mix of activities, public spaces, and uses to improve access and social interaction
- Strategically planning for infrastructure alongside growth to ensure local amenities and services
- Specific focus on 'Healthy Homes'
- Health Impact Assessments

## Transport

- Principles include 'Healthy Streets'
- Significantly more emphasis on walking and cycling

## Design

- Health is woven into Design Principles
- Health emphasis within public realm, tall and high-density buildings policies

## Town Centres

- Fast Food Takeaways
- Gambling premises
- Shisha Shops

## Climate Change & Pollution

- Passive Design approach improving quality and comfort
- Specific 'Healthy Homes' sub-policy

## Green & Blue Infrastructure

- Health woven into Green and Blue Infrastructure Principles
- Access to open space and nature
- Protecting trees

## A holistic understanding of social infrastructure



### Social infrastructure principles

Meeting needs and understanding the wider network of social infrastructure

Promoting community cohesion and a sense of belonging

Equitable and safe access

Flexible and adaptable infrastructure

Integrating with its context and character

Becoming a community focal point

Contributing to the local economy and vitality of town centres

Contributing to disaster resilience

Maintenance, longevity and long-term management

Planned, delivered and maintained together with residents and stakeholders

## The Infrastructure Delivery Plan

- Digital document
- Collaborative development
- Identifying opportunities for co-location

## Policies

- Public Toilets
- Food Growing
- Sports, Recreation and Play